



You are invited to a presentation on ***Fire Safety in the Home***



- ❖ Thursday, May 1, 2014 from 6:30 to 8:00 P.M.
- ❖ Cirby Elementary School Library
- ❖ Hosted by the Hillcrest Neighborhood Association
- ❖ Free presentation by the Roseville Fire Department
- ❖ Protective actions you can take
- ❖ For more information and related resources, visit www.usfa.fema.gov

Are you aware of fire risks in your home? Are your smoke alarms working properly? Do you have a fire escape plan? Rob Baquera, the Public Safety Community Relations Analyst from the Roseville Fire Department, will be giving a presentation about what you can do to prevent fires in your home.

You are also welcome to attend the upcoming Roseville Fire Department open houses, which take place on the 1st Saturday of every month from 10:00 A.M. to 12:00 P.M.

May 3 (Water Safety) – Fire Station 3, 1300 Cirby Way

June 7 (Burn/Fire Safety) – Fire Station 9, 2451 Hayden Parkway

July 5 (Celebration/Cooking Safety) – Fire Station 2, 1398 Junction Boulevard

Our quarterly community meetings are primarily to educate, hear your concerns, get your input on HNA business and goals, and have a dialog with city officials.

Are you interested in getting involved with the Hillcrest Neighborhood Association? If so, please come to our community meeting to learn more about volunteer opportunities!

Board Members: Darby Anderson, President; Steve Lutz, Vice President; Peggy Greene, Treasurer; (Vacant), Secretary; Bill Williamson, RCONA Representative; Bill Foster, At Large; Alex Clark, At Large. Newsletter Editor: Lisa Morris.



Sign Up for Nextdoor



Nextdoor

You may not have heard of Nextdoor yet, but we want to remedy that! Nextdoor is a private social network for neighborhoods, used to communicate with neighbors about events, share contact information for reputable vendors, organize Neighborhood Watch groups, and much more! As of this newsletter, only about 45 residents of the Hillcrest Neighborhood have signed up, so we encourage you to check it out, learn more, and sign up! Please visit www.nextdoor.com to get started. There is even an app for iPhone and Android users!



Police Update

At our last community meeting, Officer Bryan Hays from the Roseville Police Department (bhays@roseville.ca.us) gave us a brief safety

update, as well as answered a few of our questions. He encouraged us to email him with questions or concerns, as we can help be the eyes and ears of our neighborhood. Any concerns about transients should be directed to Officer Dave Flood (dflood@roseville.ca.us). For more information, including contact phone numbers and email addresses for all Roseville Police Department Officers, visit www.roseville.ca.us/police



Water Crisis Update

Also at our last community meeting, we had an informative presentation by Environmental Utilities Administrative Analyst Sean Bigley on the water crisis in Roseville, and all over California.

According to Roseville Environmental Utilities

Director Ed Kriz in a recent news article, "While the region is certainly not out of the drought, the recent storms have helped and made the shutoff of the [groundwater] wells possible. The City will continue to monitor the water supply situation and may restart use of the groundwater wells in the future." For updates and more information, visit www.protectourfolsomwater.com.

Did You Know?

Roseville once boasted the largest ice plant in the world. A new world of commerce opened up when the Central Pacific and the Union Pacific met at Promontory, Utah to form the Transcontinental Railroad. California began shipping fresh fruits and vegetables all the way to New York. Demand for fresh goods in the Midwest and eastern states fueled the prosperity of California agriculture well into the 1900's. The problem was how to keep all that food from spoiling during the long trip. There was an ice plant in Sacramento, but with limited capacity. Then, the Pacific Fruit Express (PFE, see photo below) organized in 1908, began ice-making operations after completion of a \$250,000 cooling plant next to the Roseville rail yard. By 1913, PFE doubled its cold storage capacity to 30,000 tons. Specially made rail cars were outfitted with cages that were filled with large ice blocks to keep perishables cold. Years later, they figured out how to put that ice-making plant in a much smaller box known as the refrigerator.



(Originally printed in the September 2000 Hillcrest Neighborhood Quarterly.

Do you have any stories or historical information about our neighborhood that you would be willing to share? We would love to hear them! Please let us know at the community meeting if you are willing to contribute.

Neighborhood Focus—Cirby School



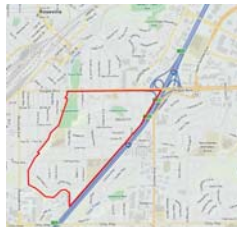
We have 400 students in Kindergarten through 5th grade at Cirby Elementary School. Our Parent Teacher Club is very active this year. They sponsor many school activities and fundraise for field trips and classroom supplies.

We hold monthly family movie nights. On May 9th, we will hold our big Cinco de Mayo Fiesta and Salsa Competition. Our annual Open House will take place on May 22nd this year.

If you'd like more details on any of these events, please stop by or give us a call at (916) 771-1730. Thank you, Karen Quinlan, Principal.

About Us

The Hillcrest Neighborhood Association (HNA) is comprised of volunteers interested in neighborhood safety issues, being a collective voice to the City of Roseville, and promoting community with social events for those of us that live in the Hillcrest boundaries (Douglas to the North, Dry Creek on the West, Linda Creek to the South, and I-80 to the East). There are about 750 homes and businesses in the Hillcrest Neighborhood that are automatically members of the Association.



Board Elections

At our February 6th community meeting, we elected a new president for HNA. Darby Anderson has taken over this role from Craig Garbe. Please welcome him into his new position!

Tim Brooks stepped down from serving on the Board as a member at large, and Alex Clark took over in his place. If you or anyone you know would be interested in the vacant secretary position, please let us know at the community meeting!

Mark Your Calendars!

--May 9 – Cirby Elementary Cinco de Mayo Fiesta and Salsa Competition



--May 10 & 11 (Mother's Day Weekend) – BerryFest, Placer County Fairgrounds on Washington Boulevard, 10 a.m. to 6 p.m.

--May 10 – Community Shredding and E-Waste Day, Mahany Park, 10 a.m. to 2 p.m.

--May 12 – "Coffee with City Council" with Pauline Roccucci (discuss any topic, such as neighborhood problems, suggestions, planning, safety, traffic, etc.), Downtown Library, 225 Taylor Street, 1 p.m.

--May 15 – RCONA General Meeting, Mahany Park, 7 p.m. to 8:30 p.m.

--May 22 – Cirby Elementary Open House

--June 14 – Movie in the Park, "A Bug's Life," Woodbridge Park, 415 Sierra Boulevard

--June 19 – RCONA General Meeting, Mahany Park, 7 p.m. to 8:30 p.m.

--June 28 – Movie in the Park, "Frozen," H. C. Elliott Park, 1421 Cushendall Drive

--July 12 – Movie in the Park, "Wall-E," Eich Middle School, 1509 Sierra Gardens Drive. **We need HNA volunteers to help set up for this event!**

--July 17 – RCONA General Meeting, Mahany Park, 7 p.m. to 8:30 p.m.

--July 26 – Movie in the Park, "Gravity," Royer Park, 190 Park Drive

--August 5 – **National Night Out**

--August 8 – "Coffee with City Council" with Mayor Susan Rohan, Pipeline Coffee House, Pleasant Grove Blvd. & Foothills Blvd., 10 a.m.

--August 9 – Movie in the Park, "The LEGO Movie," Crestmont Park, 1500 Champion Oaks Drive

--August 23 – Movie in the Park, "Planes," Fred Festersen Park, 2150 Village Green Drive



Every Tuesday night during May, June, and July, 5 p.m. to 9 p.m. (dozens of vendors, live bands, kids' fun zone, farmer's market, Hot Rods & Classic Cars)

COMFORT, NOT CORPORATE



WATCH ANY SPORT ANY TIME!

*We have the Sunday Ticket, ESPN Game Plan,
Big Ten Network, Pac Ten Network, MLB,
Soccer, NHL, NASCAR, Boxing and MMA*

**VOTE FOR US!
BEST BURGER**



**311 Judah Street
Roseville, CA
916.786.6655
www.bunzsportspub.com**



Est. 1984